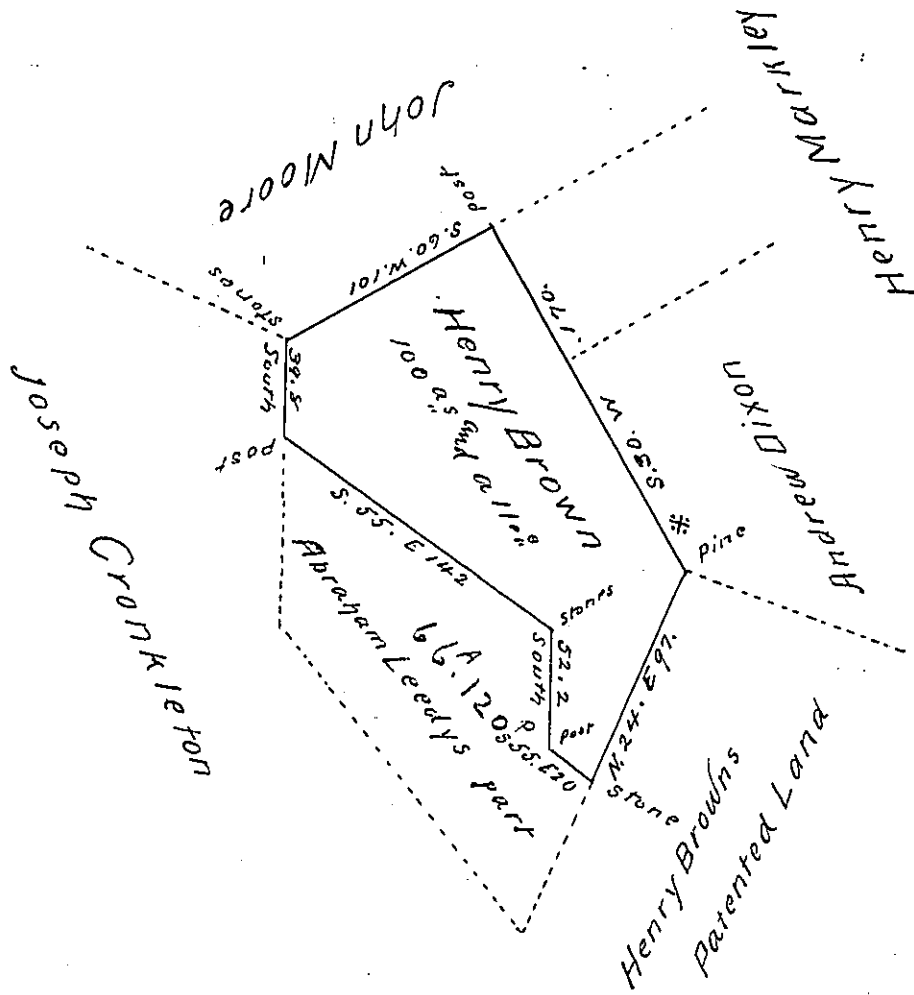


* Say N. 30° W. 170 ps



Situated in Woodberry Township Bedford County containing 100 acres and the usual allowance &c. part of 190 acres and allowance surveyed to Henry Brown the 3^d day of June 1802 in pursuance of a Warrant dated the 30th day of March 1802 Struck of the original Tract the 11th day of May 1810 By

To Andrew Porter Esquire William Piper Deputy Surveyor General

IN TESTIMONY that the above is a copy of the original remaining on file in the Department of Internal Affairs of Pennsylvania, made conformably to an Act of Assembly approved the 16th day of February, 1833, I have hereunto set my Hand and caused the Seal of said Department to be affixed at Harrisburg, this eleventh day of January 1903

Joseph P. Brown
Secretary of Internal Affairs.